

Aqara

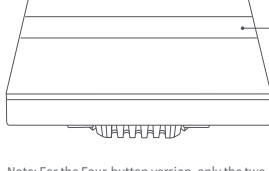


Display Switch V1 **EN**

Product Introduction

A smart 2-channel with-neutral wall switch with four configurable buttons, which provides different themes, icons, or texts to clearly showcase the function of each button, so users can easily identify and control the corresponding light or appliance without guessing. With power monitoring and Matter over Bridge support, it expands energy-efficiency but also accessibility for users.

*This product requires a Zigbee3.0 hub to function.



Double-click quickly and then long-press for 5 seconds to restore factory settings
Quick press 3 times: Confirm that the hub is within acceptable distance

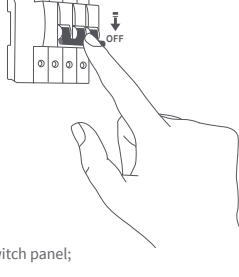
Note: For the Four-button version, only the two buttons on the left are relays. The other buttons are wireless switches, and need to be configured on the App.

Warnings

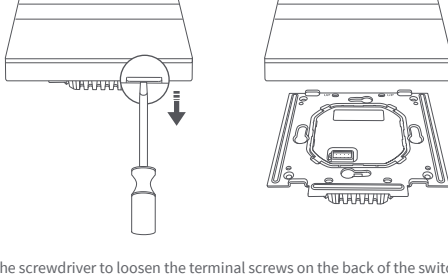
1. The installation of this product involves strong electric currents, and must be installed by professionals in accordance with electrical specifications and product instructions;
2. This product is for indoor use only. Do not use it in a humid environment or outdoors.
3. Avoid excessive moisture. Do not spill water or other liquids on this product.
4. Do not place this product near heat sources;
5. Do not attempt to repair this product by yourself. Repairs should be performed by authorized professionals.
6. Do not scratch the display screen with sharp objects.

Installation Methods

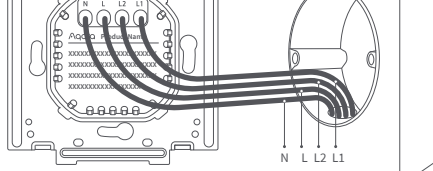
1. Before installation, please ensure that the main power switch is switched off at the circuit breaker.



2. Use a Phillips head screwdriver to pry open the switch panel;

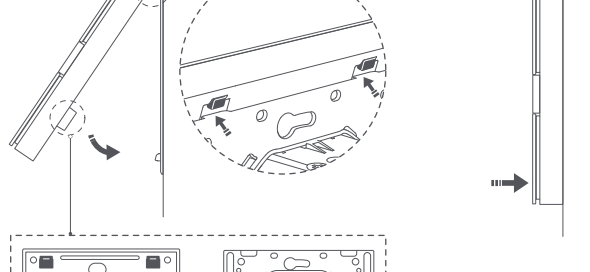
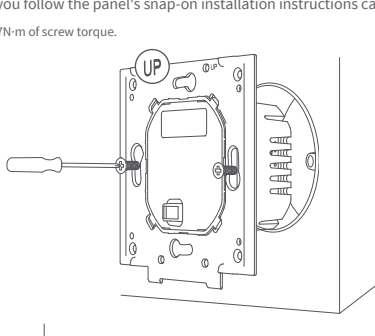


3. Use the screwdriver to loosen the terminal screws on the back of the switch. Connect the live wire to the L terminal, connect the neutral wire to N terminal, and connect the load (light) wire to the L1 and L2 terminal, and after confirming that the wiring is correct, tighten the terminal screws. Maximum load is 8 Amps (Resistive Load)

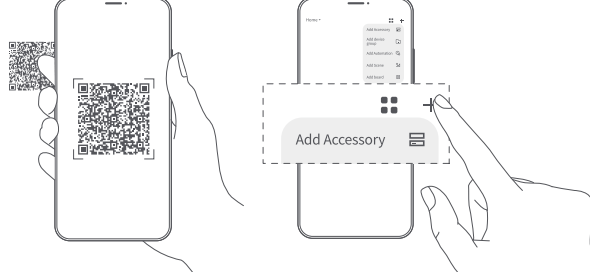
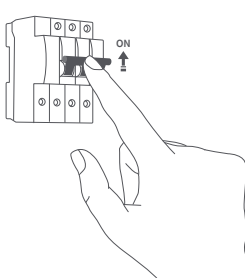


4. Use the included screws to secure the switch to the wall junction box and snap on the panel. Ensure you follow the panel's snap-on installation instructions carefully.

*Do not exceed 0.7N·m of screw torque.



5. Turn on the main power switch and press the left button (wired to load) to turn on the lights, if the lights operate normally, the switch is working properly.



Aqara Home App

Quick Setup

1. Please add a hub to the App according to the hub's manual;
2. Open the App, click "+" in the upper right corner of the homepage, enter the "Add Device (Accessory)" page, and select Display Switch V1 EU, and follow the instructions;

*If adding fails, please move the hub closer to the product and try again after powering on.

Effective distance verification: Quickly short press any button on the switch 3 times, and the hub will emit a prompt tone, indicating that the device and the hub can communicate effectively.

Product Specifications

Display Switch V1 EU
Model: WS-K02D
Dimensions: 86*86*42.2 mm (3.39 × 3.39 × 1.66 in.)
Operating Temperature: -10°C ~ 40°C (14°F ~ 104°F)
Wireless Protocols: Zigbee, Bluetooth
Operating Humidity: 0 ~ 95% RH, no condensation
Electrical Rating: 200 - 240 VAC, 50/60 Hz, Max 8 A (Resistive Load), μ
What is in the Box: Display Switch V1 EU × 1, User Manual × 1, Compliance Statement × 1, Screw Kit × 2

FAQ

If you have any other questions about this product, you can find more product information on the following website:
<https://store-support.aqara.com/products/display-switch-v1-eu/>

Manufacturer: Lumi United Technology Co., Ltd.
Address: Room 801-804, Building 1, Gongwen Park, Nanshan iPark, No. 3370, Liuxian Avenue, Fuguang Community, Taoyuan Residential District, Nanshan District, Shenzhen, China.

Online Customer Service: [<http://www.aqara.com/support>](<http://www.aqara.com/-support>)
Email: support@aqara.com